



BROADLOOM
CARPETS





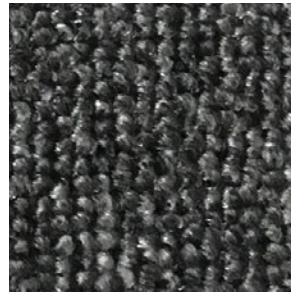
ORIGIN



Smoky Grey
1395



Beige Bliss
1396



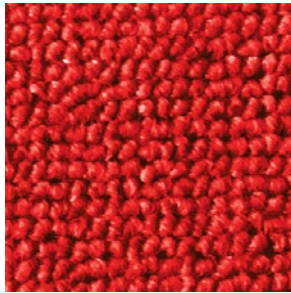
Black Diamond
1397



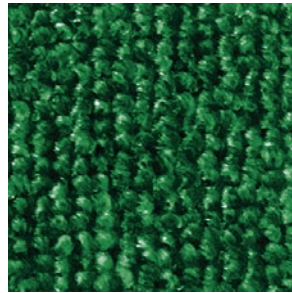
Biru Laut
1414



Merah Mekar
1415



Chilli Red
1416



Hijau
1417

SPECIFICATION

Product Name	: ORIGIN
Construction	: Level Loop Pile
Yarn Type	: 100% PP BCF Fiber
Gauge	: 1/8
Pile Height	: 3±0.5mm
Total Thickness	: 5±1mm
Pile Weight	: ±12oz / yd ²
Total Weight	: 1200±50g
Roll Width	: 4m



Smoky Grey-1395



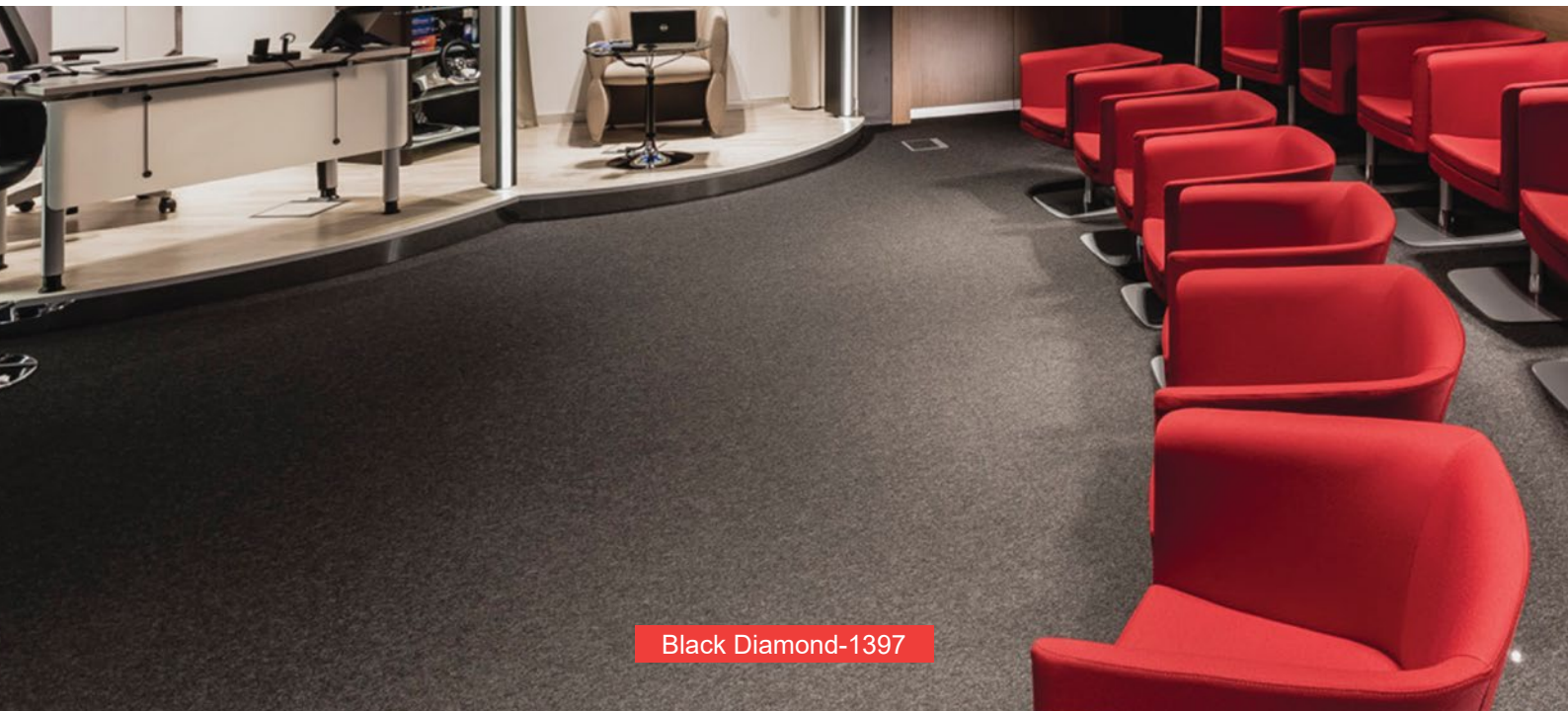
Beige Bliss-1396



Biru Laut-1414



Chilli Red-1416



Black Diamond-1397

IMPORTANT NOTES:

- Vacuum carpets regularly in a diagonal direction.
- Use a good quality carpet cleaner according to the manufacturer's instructions to remove stains and avoid using petrol or similar products.
- Actual production may vary slightly from the sample due to batch variations.
- Dye lot variations may cause slight color differences in carpets.
- Protect carpets with chair pads to maintain appearance, prevent wear, and avoid carpet delamination.
- Shading, commonly known as "water marking," is an effect of carpet pile direction changes, and it is a characteristic of the product and not a manufacturing defect.
- Special attention may be required by installers for patterned carpets to ensure a suitable match.



Antistatic



NO delamination



Ultraviolet resistance



Reduce flammability



Wear resistance



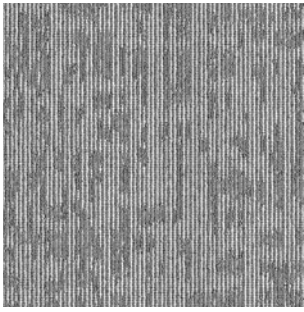
Environmental Friendly



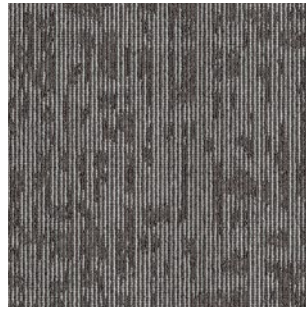
AERIS

SPECIFICATION

Product Name : AERIS
Construction : Multi Level Loop Pile
Yarn Type : 100% PP BCF Fiber
Gauge : 1/10
Pile Height : ±4 to 4.5mm
Total Thickness : ±5 to 6mm
Pile Weight : 550±20g/m²
Total Weight : 1500±50g/m²
Roll Width : 4m



Powder Steel-1418



Granite Grey-1419



IMPORTANT NOTES:

- Vacuum carpets regularly in a diagonal direction.
- Use a good quality carpet cleaner according to the manufacturer's instructions to remove stains and avoid using petrol or similar products.
- Actual production may vary slightly from the sample due to batch variations.
- Dye lot variations may cause slight color differences in carpets.
- Protect carpets with chair pads to maintain appearance, prevent wear, and avoid carpet delamination.
- Shading, commonly known as "water marking," is an effect of carpet pile direction changes, and it is a characteristic of the product and not a manufacturing defect.
- Special attention may be required by installers for patterned carpets to ensure a suitable match.



Antistatic



NO delamination



Ultraviolet resistance



Reduce flammability



Wear resistance



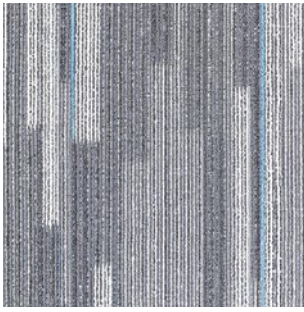
Environmental Friendly



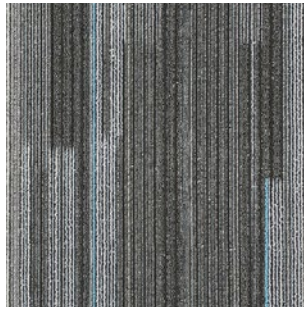
CITYSCAPE

SPECIFICATION

Product Name : CITYSCAPE
Construction : Textured Multi Level Loop Pile
Yarn Type : 100% PP BCF Fiber
Gauge : 1/8
Pile Height : 4±0.5mm
Total Thickness : 6±1mm
Pile Weight : 500±50g/m²
Total Weight : 1450±50g/m²
Roll Width : 4m



Nomad Grey-1398



Carbon Grey-1399



Nomad Grey-1398



Carbon Grey-1399

IMPORTANT NOTES:

- Vacuum carpets regularly in a diagonal direction.
- Use a good quality carpet cleaner according to the manufacturer's instructions to remove stains and avoid using petrol or similar products.
- Actual production may vary slightly from the sample due to batch variations.
- Dye lot variations may cause slight color differences in carpets.
- Protect carpets with chair pads to maintain appearance, prevent wear, and avoid carpet delamination.
- Shading, commonly known as "water marking," is an effect of carpet pile direction changes, and it is a characteristic of the product and not a manufacturing defect.
- Special attention may be required by installers for patterned carpets to ensure a suitable match.



Antistatic



NO delamination



Ultraviolet resistance



Reduce flammability



Wear resistance



Environmental Friendly



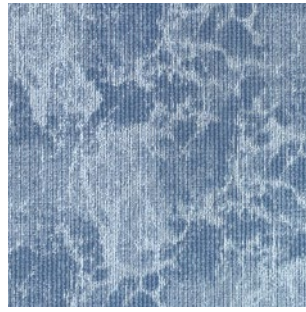
HARMONIC

SPECIFICATION

Product Name : HARMONIC
Construction : Textured Multi Level Loop Pile
Yarn Type : 100% PP BCF Fiber
Gauge : 1/12
Pile Height : 5/4/2.5mm
Total Thickness : 6±1mm
Pile Weight : 600±50g/m²
Total Weight : 1800±50g/m²
Roll Width : 4m



Blue Haze-1400



Frosty Sky-1401



Blue Haze-1400



Frosty Sky-1401

IMPORTANT NOTES:

- Vacuum carpets regularly in a diagonal direction.
- Use a good quality carpet cleaner according to the manufacturer's instructions to remove stains and avoid using petrol or similar products.
- Actual production may vary slightly from the sample due to batch variations.
- Dye lot variations may cause slight color differences in carpets.
- Protect carpets with chair pads to maintain appearance, prevent wear, and avoid carpet delamination.
- Shading, commonly known as "water marking," is an effect of carpet pile direction changes, and it is a characteristic of the product and not a manufacturing defect.
- Special attention may be required by installers for patterned carpets to ensure a suitable match.



Antistatic



NO delamination



Ultraviolet resistance



Reduce flammability



Wear resistance



Environmental Friendly



SEREN



Sandstone
1402



Stormy Horizon
1403



Ruby
1404



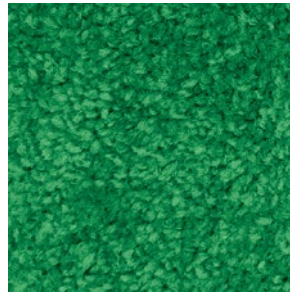
Serenade
1405



Golden Grain
1406



Royal Regatta
1407



Celery
1408

SPECIFICATION

Product Name	: SEREN
Construction	: Cut Pile
Yarn Type	: 100% PP Mixed Twist Fiber
Gauge	: 1/10
Pile Height	: 6±1mm
Total Thickness	: 7±1mm
Pile Weight	: 550g±50g/m ²
Total Weight	: 1750±50g/m ²
Roll Width	: 4m



Sandstone-1402



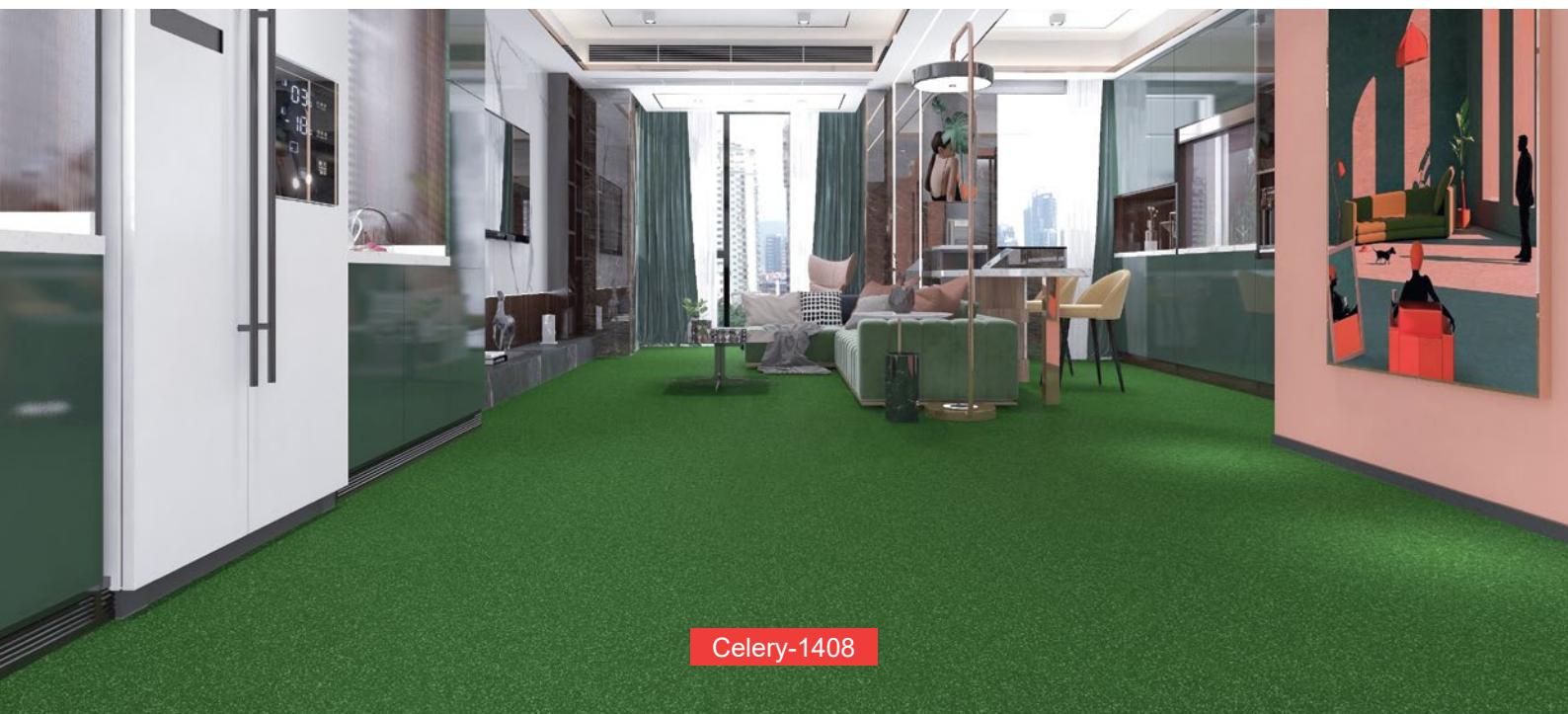
Stormy Horizon-1403



Golden Grain-1406



Royal Regatta-1407



Celery-1408

IMPORTANT NOTES:

- Vacuum carpets regularly in a diagonal direction.
- Use a good quality carpet cleaner according to the manufacturer's instructions to remove stains and avoid using petrol or similar products.
- Actual production may vary slightly from the sample due to batch variations.
- Dye lot variations may cause slight color differences in carpets.
- Protect carpets with chair pads to maintain appearance, prevent wear, and avoid carpet delamination.
- Shading, commonly known as "water marking," is an effect of carpet pile direction changes, and it is a characteristic of the product and not a manufacturing defect.
- Special attention may be required by installers for patterned carpets to ensure a suitable match.



Antistatic



NO delamination



Ultraviolet resistance



Reduce flammability



Wear resistance



Environmental Friendly



ALICENT



Desert Dune
1409



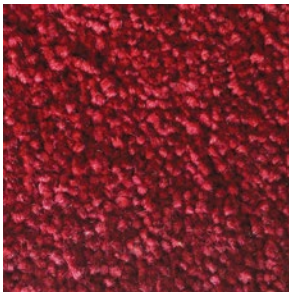
Linen Luxe
1410



Cashmere Cascade
1411



Walnut Splendor
1412



Rose Regency
1413

SPECIFICATION

Product Name : **ALICENT**
Construction : Cut Pile
Yarn Type : 100% PP Mixed Twist Fiber
Gauge : 1/10
Pile Height : 15mm
Total Thickness : 17±1mm
Pile Weight : 1600gm±50g/m²
Total Weight : 2950±50g/m²
Roll Width : 4m



Desert Dune-1409



Linen Luxe-1410



Cashmere Cascade-1411



Walnut Splendor-1412



Rose Regency-1413

IMPORTANT NOTES:

- Vacuum carpets regularly in a diagonal direction.
- Use a good quality carpet cleaner according to the manufacturer's instructions to remove stains and avoid using petrol or similar products.
- Actual production may vary slightly from the sample due to batch variations.
- Dye lot variations may cause slight color differences in carpets.
- Protect carpets with chair pads to maintain appearance, prevent wear, and avoid carpet delamination.
- Shading, commonly known as "water marking," is an effect of carpet pile direction changes, and it is a characteristic of the product and not a manufacturing defect.
- Special attention may be required by installers for patterned carpets to ensure a suitable match.



Antistatic



NO delamination



Ultraviolet resistance



Reduce flammability



Wear resistance

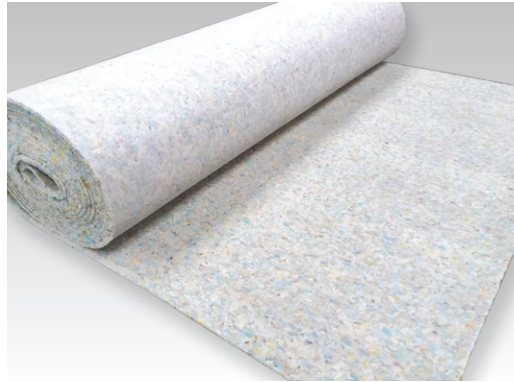


Environmental Friendly

ACCESSORIES



Heat Bond Tape



PU Underlay



Carpet Gripper



Accessories



Sealant



CA Glue



Carpet Glue



Vinyl Glue



PRIME SPC

ELEGANT CLIQ

KAYU PLUS

LIVINN

PRIME FLOOR

CARPET TILE

BROADLOOM CARPETS

MOSQUE CARPETS

URBAN CLIQ

FIRST CHOICE

Yes!

Floor Plus+ Accessories

PRIMEFIT

PRIME Play

PRIME Décor

PRIME Ballistic

PRIME Sports

PRIME Paver

PRIME Flex

Grass King

AcoustED UNDERLAY

DURAFORT UNDERLAY

Aktiv MAT

Activ Sports Surface

OUR BRANDS



PSF INDUSTRIES SDN BHD (912218-D)

No. 19, Jalan BA/3, Kawasan Perusahaan Bukit Angkat, 43000 Kajang, Selangor, Malaysia.

+603-8741 3841

+6017-556 0103

admin@primelay.com.my

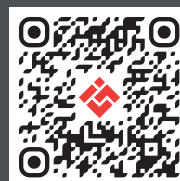
www.primelay.com.my



scan to visit

Introducing Our App

New Deals And Products, just a tap away, download below



GET IT ON Google Play



Download on the App Store

