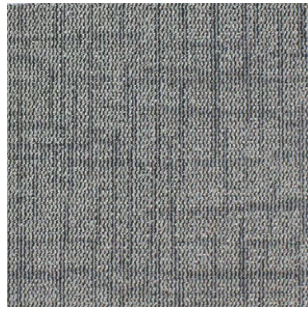
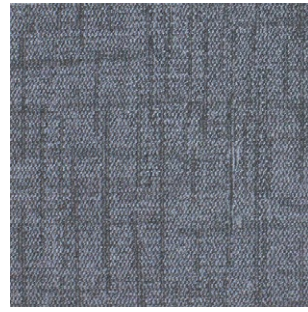


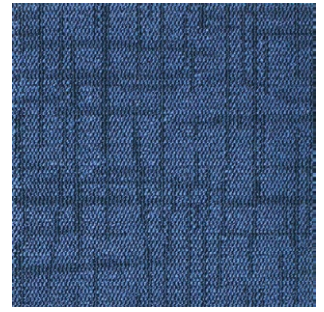
Sand Storm-1211



Silver Dust-1212



Shadow Night-1213



Oasis Blue-1214



Silver Dust 1212



Oasis Blue 1214





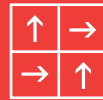
Sand Storm-1211 & Shadow Night 1213

## SPECIFICATION

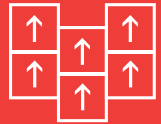
- Product Name** : JUNIPER CT
- Construction** : Tufted Multilevel Loop Pile
- Pile Material** : 100% B.C.F Synthetic Fiber
- Pile Weight** : 28 oz +/- (940g/m<sup>2</sup>)
- Total Weight** : 6050g/m<sup>2</sup>
- Total Thickness** : 7mm +/-
- Backing Type** : PVC with Fiberglass Reinforcement
- Tile Size** : 500mm x 500mm
- Tile Per Box** : 20pcs

## RECOMMENDED INSTALLATION METHODS

Quarter-turn



Ashler-turn



### IMPORTANT NOTES:

- Vacuum carpets regularly in a diagonal direction.
- Use a good quality carpet cleaner according to the manufacturer's instructions to remove stains and avoid using petrol or similar products.
- Actual production may vary slightly from the sample due to batch variations.
- Dye lot variations may cause slight color differences in carpets.
- Protect carpets with chair pads to maintain appearance, prevent wear, and avoid carpet delamination.
- Shading, commonly known as "water marking," is an effect of carpet pile direction changes, and it is a characteristic of the product and not a manufacturing defect.
- Special attention may be required by installers for patterned carpets to ensure a suitable match.



Antistatic



NO delamination



Ultraviolet resistance



Reduce flammability



Wear resistance



Environmental Friendly



**PRIMELAY®**

**OUR BRANDS**



scan to visit

**PSF INDUSTRIES SDN BHD** (912218-D)

No. 19, Jalan BA/3, Kawasan Perusahaan Bukit Angkat, 43000 Kajang, Selangor, Malaysia.

+6017-556 0103

admin@primelay.com.my

[www.primelay.com.my](http://www.primelay.com.my)

