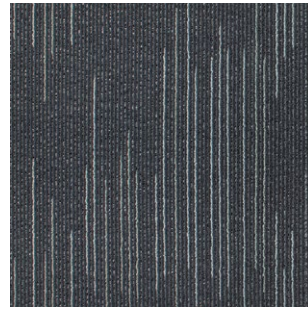




Matrix Brown-1137



Grey Matrix-1138



Black Matrix-1139



Matrix Navy-1140



Matrix Brown-1137



Grey Matrix-1138 & Black Matrix-1139





Matrix Navy-1140

## SPECIFICATION

- Product Name** : CONNEXA CT
- Construction** : Textured Multi Level Loop Pile
- Pile Material** : 100% B.C.F Synthetic Fiber
- Pile Weight** : 28 oz +/- (940g/m<sup>2</sup>)
- Total Weight** : 5050g/m<sup>2</sup>
- Total Thickness** : 7mm +/-
- Backing Type** : PVC with Fiberglass Reinforcement
- Flammability** : Passes (ASTM E 648, GB 8624-2006)
- Tile Size** : 500mm x 500mm
- Tile Per Box** : 20pcs

### IMPORTANT NOTES:

- Vacuum carpets regularly in a diagonal direction.
- Use a good quality carpet cleaner according to the manufacturer's instructions to remove stains and avoid using petrol or similar products.
- Actual production may vary slightly from the sample due to batch variations.
- Dye lot variations may cause slight color differences in carpets.
- Protect carpets with chair pads to maintain appearance, prevent wear, and avoid carpet delamination.
- Shading, commonly known as "water marking," is an effect of carpet pile direction changes, and it is a characteristic of the product and not a manufacturing defect.
- Special attention may be required by installers for patterned carpets to ensure a suitable match.

## RECOMMENDED INSTALLATION METHODS

Quarter-turn



Ashler-turn



Antistatic



NO delamination



Ultraviolet resistance



Reduce flammability



Wear resistance



Environmental Friendly



**PRIMELAY®**

**OUR BRANDS**



scan to visit

**PSF INDUSTRIES SDN BHD** (912218-D)

No. 19, Jalan BA/3, Kawasan Perusahaan Bukit Angkat,  
43000 Kajang, Selangor, Malaysia.

+6017-556 0103

admin@primelay.com.my

[www.primelay.com.my](http://www.primelay.com.my)

