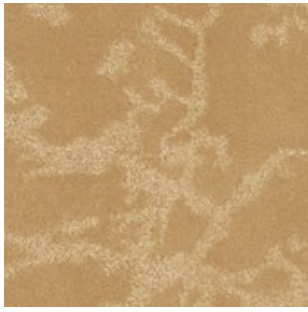
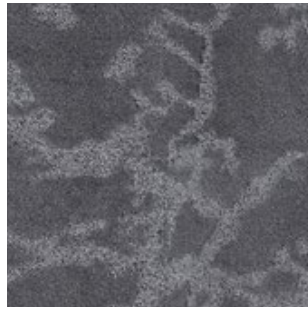




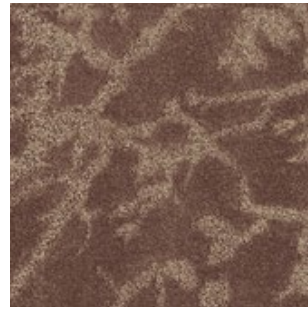
LINDON



Golden Beige-1117



Pigeon Grey-1118



Rustic Brown-1119



Stony Grey-1120



Pigeon Grey-1118



Rustic Brown-1119



Golden Beige-1117

SPECIFICATION

Product Name	: LINDON
Yarn Pile	: 100% Advanced Acrylon
Construction	: Textured Cut & Loop
Pile Weight	: 40 oz +/-
Total Weight	: 55 oz +/-
Pile Height	: 10mm +/-
Total Height	: 13mm +/-
Primary Backing	: Woven Polypropylene
Secondary Backing	: Action Bac
Roll Width	: 4m (13'2")
Pattern Repeat	: 2'7"(W) x 2'7"(L)



Antistatic



NO delamination



Ultraviolet resistance



Reduce flammability



Wear resistance



Environmental Friendly

IMPORTANT NOTES:

- Vacuum carpets regularly in a diagonal direction.
- Use a good quality carpet cleaner according to the manufacturer's instructions to remove stains and avoid using petrol or similar products.
- Actual production may vary slightly from the sample due to batch variations.
- Dye lot variations may cause slight color differences in carpets.
- Protect carpets with chair pads to maintain appearance, prevent wear, and avoid carpet delamination.
- Shading, commonly known as "water marking," is an effect of carpet pile direction changes, and it is a characteristic of the product and not a manufacturing defect.
- Special attention may be required by installers for patterned carpets to ensure a suitable match.



PRIMELAY®

OUR BRANDS



scan to visit

PSF INDUSTRIES SDN BHD (912218-D)

No. 19, Jalan BA/3, Kawasan Perusahaan Bukit Angkat, 43000 Kajang, Selangor, Malaysia.

+6017-556 0103

admin@primelay.com.my

www.primelay.com.my

