

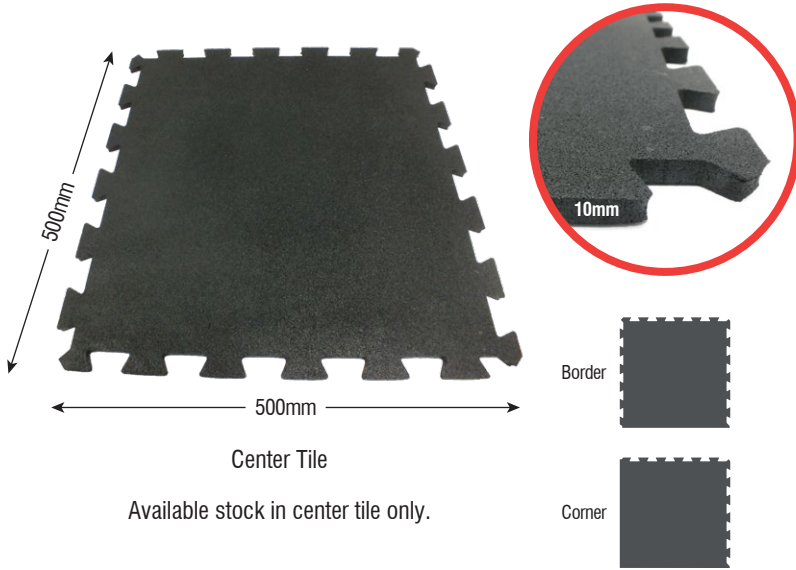


FITMAT SQUARE & INTERLOCKING MATS

High Density Gym Rubber Mats for All types of Gym Flooring



FITMAT INTERLOCK 10



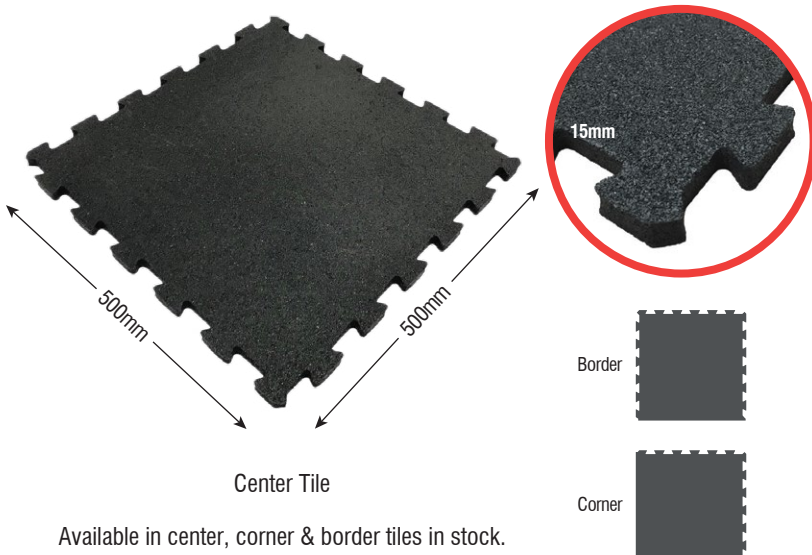
| Product Name | FITMAT INTERLOCK 10 |
|--------------|---------------------|
| Thickness | 10mm |
| Size | 500 x 500mm |
| Colour | Black |
| Weight/piece | 3.3kg± |

Recommended Accessories:

- 10mm Edging Bar
- Rubber Sealant
- PVC Skirting
- CA Glue



FITMAT INTERLOCK 15



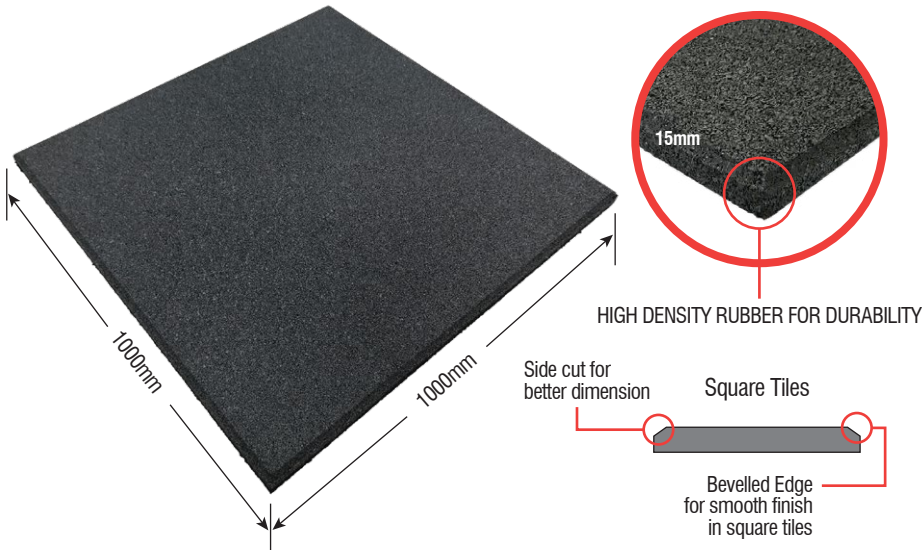
| Product Name | FITMAT INTERLOCK 15 |
|--------------|---------------------|
| Thickness | 15mm |
| Size | 500 x 500mm |
| Colour | Black |
| Weight/piece | 3.5kg± |

Recommended Accessories:

- 15mm Edging Bar
- Rubber Sealant
- PVC Skirting
- CA Glue



FITMAT SQ 15



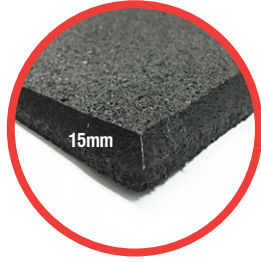
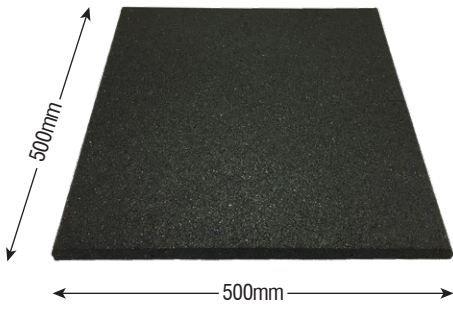
| Product Name | FITMAT SQ 15 |
|--------------|---------------|
| Thickness | 15mm |
| Size | 1000 x 1000mm |
| Colour | Black |
| Weight/piece | 14kg± |

Recommended Accessories:

- 15mm Edging Bar
- Rubber Sealant
- PVC Skirting
- CA Glue
- PU Binder



FITMAT SQ 15-Lite



| Product Name | FITMAT SQ 15-Lite |
|--------------|-------------------|
| Thickness | 15mm |
| Size | 500 x 500mm |
| Colour | Black |
| Weight/piece | 3kg± |

Recommended Accessories:

- 15mm Edging Bar
- PVC Skirting
- Rubber Sealant
- CA Glue
- PU Binder



EASY CLEAN



DURABLE



ANTI-SLIP



ANTI-VIBRATION

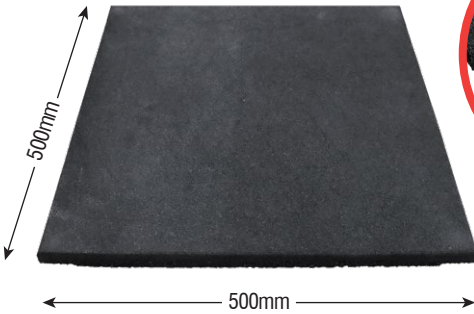


RECYCLE



GREEN

FITMAT SQ 25



| Product Name | FITMAT SQ 25 |
|--------------|--------------|
| Thickness | 25mm |
| Size | 500 x 500mm |
| Colour | Black |
| Weight/piece | 5kg± |

Recommended Accessories:

- 25mm Edging Bar
- PVC Skirting
- Rubber Sealant
- CA Glue
- PU Binder



HEAVY DUTY



EASY CLEAN



DURABLE



ANTI-SLIP



ANTI-VIBRATION



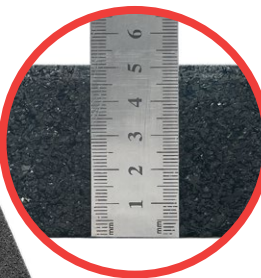
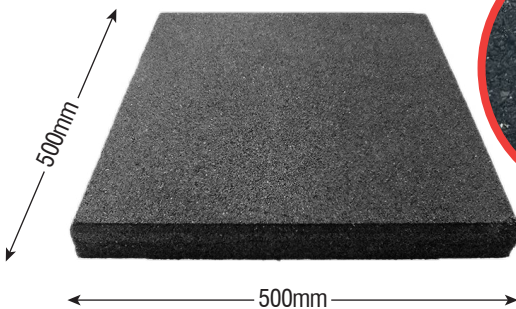
RECYCLE



GREEN

Note: Smooth Rubber Top Surface.

FITMAT SQ 50



| Product Name | FITMAT SQ 50 |
|--------------|--------------|
| Thickness | 50mm |
| Size | 500 x 500mm |
| Colour | Black |
| Weight/piece | 9.5kg± |

Recommended Accessories:

- 50mm Edging Bar
- PVC Skirting
- Rubber Sealant
- CA Glue
- PU Binder



HEAVY DUTY



EASY CLEAN



DURABLE



ANTI-SLIP



ANTI-VIBRATION



RECYCLE



GREEN

Top or Full Pigmented Colour Options:



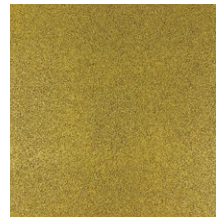
RED



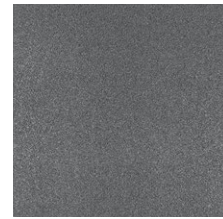
BLUE



GREEN



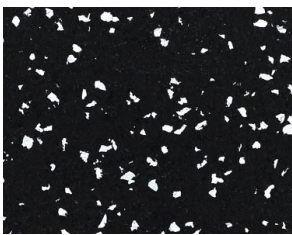
YELLOW



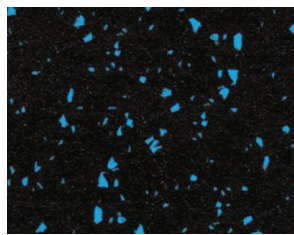
DARK GREY

*10 & 15mm tiles are fully pigmented. 20mm & above are top pigmented.
Colour may vary tone/shades in different rubber granule in different quality.

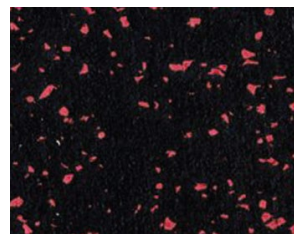
Top or Full EPDM Sparkle Colour Options:



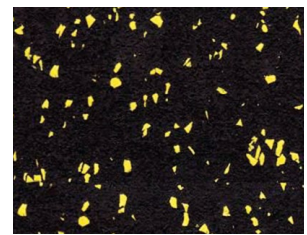
15%-White Sparkle



15%-Island Blue Sparkle



15%-Rosy Red Sparkle



15%-Yellow Sparkle

*10 & 15mm tiles are Fully EPDM sparkled. 20mm & above are top EPDM sparkled.

Custom Colour Options:

Mix & Match colour option from our 14 available **PRIMEFlex** EPDM colour ranges.



Brick Red
ST101



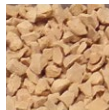
Rosy Red
SP119



Burnt Orange
BC106



Bright Yellow
BC107



Light Brown
ST110



Penny Brown
ST109



Primrose Light
BC113



Apple Green
BC103J



Bright Green
BC103



Island Blue
BC104



Sky Blue
BC105



Royal Purple
SP115



Off White
BC116S



Light Grey
ST112

Custom Made Options:

- 1000 x 1000mm square tile in 20 & 25mm.
- Other EPDM colour Sparkle from our **PRIMEFlex** options & different sparkle %.
- 25 to 70mm thick square gym tile available in 500x500mm tile size.
- For all custom made options minimum quantity of 50sqm is required. T&C apply.
- Please contact us to discuss before any order.

Minimum order quantity require for any custom colour. Max 2-3 colours can be used based on sparkle %.

Photos are for illustration purpose only, original product colour may vary.

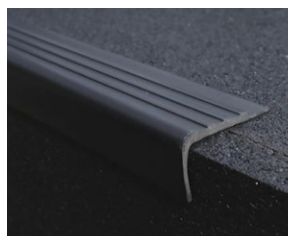
Recommended Accessories:



Edging Bar



Rubber Skirting



Rubber Nosing



2 Component
PU Binder 149



PU Binder 20kg



CA Glue



Rubber Sealant

SPC
CLIQ

URBAN CLIQ

LIVINN

FIRST
CHOICE

PRIMEFLOOR

CARPET TILE

BROADLOOM
CARPETS

MOSQUE
CARPETS

KAYUPLUS⁺
LAMINATE FLOORING

ELEGANT
CLIQ

Yes!

Floor Plus⁺
Accessories

OUR BRANDS

PRIMEFIT

PRIMEPlay

PRIMEDécor

PRIME
Ballistic

PRIMESports

PRIMEPaver

PRIMEFlex

Grass King

AcousTED⁺
UNDERLAY

DURAFORT
UNDERLAY

AktivMAT

Activ⁺
Sports Surface



scan to visit

www.primelay.com.my

PSF INDUSTRIES SDN BHD (912218-D)

No. 19, Jalan BA/3, Kawasan Perusahaan Bukit Angkat,
43000 Kajang, Selangor, Malaysia.

+603-8741 3841

+6017-556 0103

admin@primelay.com.my

