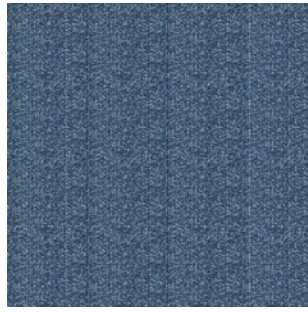


CARPET TILE

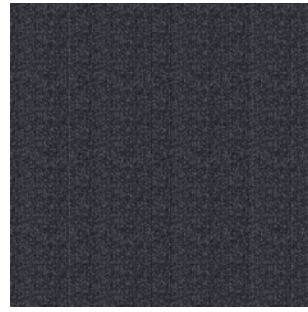




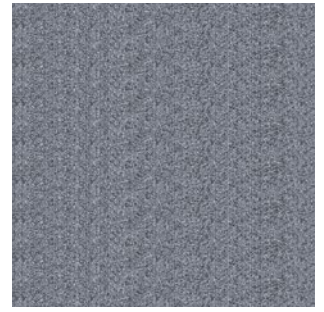
Desert Beige-1376



Blue Horizon-1377



Smoky Charcoal-1378



Silver Grey-1379





Smoky Charcoal-1378 + Silver Grey-1379

SPECIFICATION

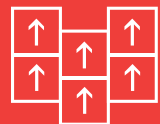
Product Name	: NEST CT
Construction	: Tufted Level Loop Pile
Yarn Type	: 100% BCF Synthetic Fiber
Pile Weight	: ± 16 oz / yd ²
Pile Height	: 3.5mm
Backing Type	: Improved Bitumen + Non-woven
Tile Size	: 50cm x 50cm
Tile Per Box	: 20pcs

RECOMMENDED INSTALLATION METHODS

Quarter-turn



Ashler-turn



IMPORTANT NOTES:

- Vacuum carpets regularly in a diagonal direction.
- Use a good quality carpet cleaner according to the manufacturer's instructions to remove stains and avoid using petrol or similar products.
- Actual production may vary slightly from the sample due to batch variations.
- Dye lot variations may cause slight color differences in carpets.
- Protect carpets with chair pads to maintain appearance, prevent wear, and avoid carpet delamination.
- Shading, commonly known as "water marking," is an effect of carpet pile direction changes, and it is a characteristic of the product and not a manufacturing defect.
- Special attention may be required by installers for patterned carpets to ensure a suitable match.



Antistatic



NO delamination



Ultraviolet resistance



Reduce flammability



Wear resistance



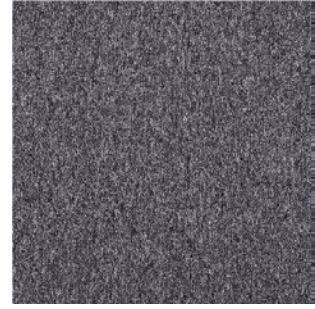
Environmental Friendly



Fine Beige
1082



Grey Ash
1083



Charcoal
1084



Garnet Red
1085



Azure Blue
1086



Golden Poppy
1087



Garnet Red-1085 & Azure Blue-1086



Fine Beige-1082 & Golden Poppy-1087



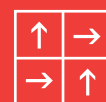
Grey Ash, Garnet Red, Azure Blue, Golden Poppy

SPECIFICATION

Product Name	: BIGIN CT
Construction	: Tufted Level Loop Pile
Yarn Type	: 100% BCF Synthetic Fiber
Total Thickness	: ±4mm
Pile Weight	: ±18 oz
Backing Type	: Improved Bitumen + Non-woven
Tile Size	: 50cm x 50cm
Tile Per Box	: 20pcs

RECOMMENDED INSTALLATION METHODS

Quarter-turn



Ashler-turn



IMPORTANT NOTES:

- Vacuum carpets regularly in a diagonal direction.
- Use a good quality carpet cleaner according to the manufacturer's instructions to remove stains and avoid using petrol or similar products.
- Actual production may vary slightly from the sample due to batch variations.
- Dye lot variations may cause slight color differences in carpets.
- Protect carpets with chair pads to maintain appearance, prevent wear, and avoid carpet delamination.
- Shading, commonly known as "water marking," is an effect of carpet pile direction changes, and it is a characteristic of the product and not a manufacturing defect.
- Special attention may be required by installers for patterned carpets to ensure a suitable match.



Antistatic



NO delamination



Ultraviolet resistance



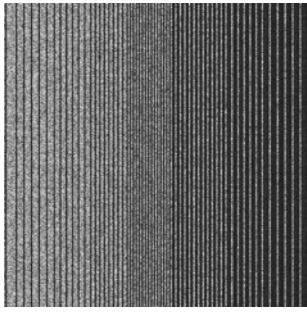
Reduce flammability



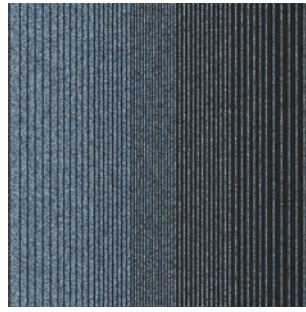
Wear resistance



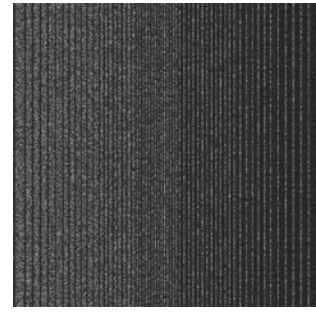
Environmental Friendly



Noir Mist-1380



Twilight Tide-1381



Carbonite-1382



Noir Mist-1380



Twilight Tide-1381



Noir Mist-1380 + Carbonite-1382



Noir Mist-1380 + Twilight Tide-1381

SPECIFICATION

Product Name	: NIGHTSHADE CT
Construction	: Textured Level Loop Pile
Yarn Type	: 100% PP
Pile Weight	: ±18oz / yd ²
Pile Height	: ±4mm
Backing Type	: Fine Bitumen + Non-woven
Tile Size	: 50cm x 50cm
Tile Per Box	: 20pcs

RECOMMENDED INSTALLATION METHODS

Quarter-turn



Ashler-turn



IMPORTANT NOTES:

- Vacuum carpets regularly in a diagonal direction.
- Use a good quality carpet cleaner according to the manufacturer's instructions to remove stains and avoid using petrol or similar products.
- Actual production may vary slightly from the sample due to batch variations.
- Dye lot variations may cause slight color differences in carpets.
- Protect carpets with chair pads to maintain appearance, prevent wear, and avoid carpet delamination.
- Shading, commonly known as "water marking," is an effect of carpet pile direction changes, and it is a characteristic of the product and not a manufacturing defect.
- Special attention may be required by installers for patterned carpets to ensure a suitable match.



Antistatic



NO delamination



Ultraviolet resistance



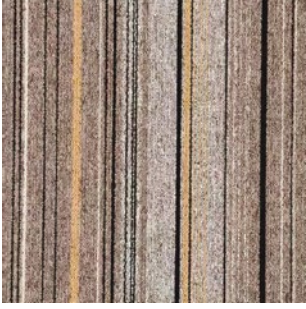
Reduce flammability



Wear resistance



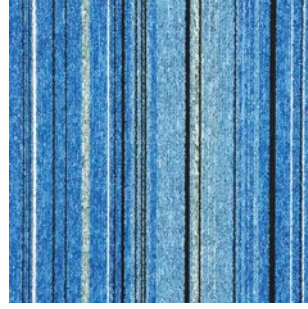
Environmental Friendly



Golden Line-1088



Grey Line-1089



Blue Line-1090



Ruby Line-1091



Grey Line-1089



Blue Line-1090



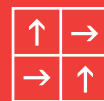
Golden Line-1088

SPECIFICATION

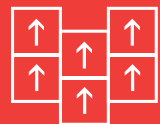
Product Name	: SKYLINE CT
Construction	: Tufted Level Loop Pile
Yarn Type	: 100% BCF Synthetic Fiber
Total Thickness	: ±4mm
Pile Weight	: ±18 oz
Backing Type	: Improved Bitumen + Non-woven
Tile Size	: 50cm x 50cm
Tile Per Box	: 20pcs

RECOMMENDED INSTALLATION METHODS

Quarter-turn



Ashler-turn



IMPORTANT NOTES:

- Vacuum carpets regularly in a diagonal direction.
- Use a good quality carpet cleaner according to the manufacturer's instructions to remove stains and avoid using petrol or similar products.
- Actual production may vary slightly from the sample due to batch variations.
- Dye lot variations may cause slight color differences in carpets.
- Protect carpets with chair pads to maintain appearance, prevent wear, and avoid carpet delamination.
- Shading, commonly known as "water marking," is an effect of carpet pile direction changes, and it is a characteristic of the product and not a manufacturing defect.
- Special attention may be required by installers for patterned carpets to ensure a suitable match.



Antistatic



NO delamination



Ultraviolet resistance



Reduce flammability



Wear resistance



Environmental Friendly



Golden Twilight-1372



Blue Flame-1373



Moonlit Mist-1374



Star Dust-1375



Golden Twilight-1372



Blue Flame-1373



Blue Flame-1373 + Moonlit Mist-1374 + Star Dust-1375

SPECIFICATION

Product Name	: SUNFYRE CT
Construction	: Multi Level Loop Pile
Yarn Type	: 100% BCF Synthetic Fiber
Pile Weight	: ±18oz / yd ²
Pile Height	: ±4mm to 5mm
Backing	: Fine Bitumen + Non-woven
Tile Size	: 50cm x 50cm
Tile Per Box	: 20pcs

RECOMMENDED INSTALLATION METHODS

Quarter-turn



Ashler-turn



IMPORTANT NOTES:

- Vacuum carpets regularly in a diagonal direction.
- Use a good quality carpet cleaner according to the manufacturer's instructions to remove stains and avoid using petrol or similar products.
- Actual production may vary slightly from the sample due to batch variations.
- Dye lot variations may cause slight color differences in carpets.
- Protect carpets with chair pads to maintain appearance, prevent wear, and avoid carpet delamination.
- Shading, commonly known as "water marking," is an effect of carpet pile direction changes, and it is a characteristic of the product and not a manufacturing defect.
- Special attention may be required by installers for patterned carpets to ensure a suitable match.



Antistatic



NO delamination



Ultraviolet resistance



Reduce flammability



Wear resistance



Environmental Friendly



Grey Eclipse
1368



Slate Storm
1369



Midnight Magic
1370



Nautical Navy
1371



Slate Storm-1369



Midnight Magic-1370

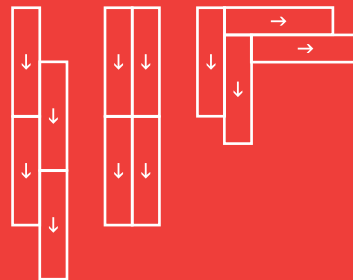


Grey Eclipse-1368 + Nautical Navy-1371

SPECIFICATION

- Product Name** : SYRAX CT
- Construction** : Textured Multi Level Loop Pile
- Yarn Type** : 100% PP BCF Fiber
- Pile Weight** : ±20oz / yd²
- Pile Height** : ±4.5mm to 5.5mm
- Backing** : Fine Bitumen + Non-woven
- Tile Size** : 25cm x 100cm
- Tile Per Box** : 24pcs

RECOMMENDED INSTALLATION METHODS



IMPORTANT NOTES:

- Vacuum carpets regularly in a diagonal direction.
- Use a good quality carpet cleaner according to the manufacturer's instructions to remove stains and avoid using petrol or similar products.
- Actual production may vary slightly from the sample due to batch variations.
- Dye lot variations may cause slight color differences in carpets.
- Protect carpets with chair pads to maintain appearance, prevent wear, and avoid carpet delamination.
- Shading, commonly known as "water marking," is an effect of carpet pile direction changes, and it is a characteristic of the product and not a manufacturing defect.
- Special attention may be required by installers for patterned carpets to ensure a suitable match.



Antistatic



NO delamination



Ultraviolet resistance



Reduce flammability



Wear resistance



Environmental Friendly



Silk Road-1092



New Street-1093



Avenue Five-1094



Third Lane-1095



Avenue Five-1094



Third Lane-1095



Silk Road-1092

SPECIFICATION

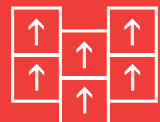
- Product Name** : FIREWALL CT
- Construction** : Tufted Level Loop Pile
- Yarn Type** : 100% BCF Synthetic Fiber
- Total Thickness** : 5-6mm +/-
- Pile Weight** : 25 oz +/-
- Backing Type** : Improved Bitumen + Non-woven
- Tile Size** : 500mm x 500mm
- Tile Per Box** : 20pcs

RECOMMENDED INSTALLATION METHODS

Quarter-turn



Ashler-turn



IMPORTANT NOTES:

- Vacuum carpets regularly in a diagonal direction.
- Use a good quality carpet cleaner according to the manufacturer's instructions to remove stains and avoid using petrol or similar products.
- Actual production may vary slightly from the sample due to batch variations.
- Dye lot variations may cause slight color differences in carpets.
- Protect carpets with chair pads to maintain appearance, prevent wear, and avoid carpet delamination.
- Shading, commonly known as "water marking," is an effect of carpet pile direction changes, and it is a characteristic of the product and not a manufacturing defect.
- Special attention may be required by installers for patterned carpets to ensure a suitable match.



Antistatic



NO delamination



Ultraviolet resistance



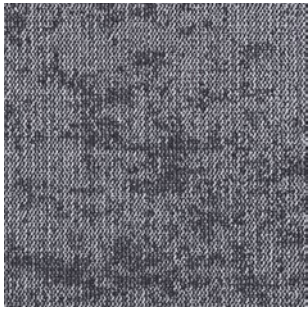
Reduce flammability



Wear resistance



Environmental Friendly



Swift Grey-1096



Salty Beige-1097



Danny Brown-1098



Coal Mine-1099



Swift Grey-1096

Salty Beige-1097



Danny Brown-1098



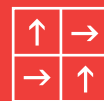
Coal Mine-1099

SPECIFICATION

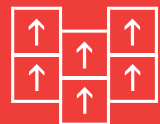
- Product Name** : PANTHOM CT
Construction : Multi Level Loop Pile
Yarn Type : 100% BCF Synthetic Fiber
Total Thickness : 5-6mm +/-
Pile Weight : 26 oz +/-
Backing Type : Improved Bitumen + Non-woven
Tile Size : 500mm x 500mm
Tile Per Box : 20pcs

RECOMMENDED INSTALLATION METHODS

Quarter-turn



Ashler-turn



IMPORTANT NOTES:

- Vacuum carpets regularly in a diagonal direction.
- Use a good quality carpet cleaner according to the manufacturer's instructions to remove stains and avoid using petrol or similar products.
- Actual production may vary slightly from the sample due to batch variations.
- Dye lot variations may cause slight color differences in carpets.
- Protect carpets with chair pads to maintain appearance, prevent wear, and avoid carpet delamination.
- Shading, commonly known as "water marking," is an effect of carpet pile direction changes, and it is a characteristic of the product and not a manufacturing defect.
- Special attention may be required by installers for patterned carpets to ensure a suitable match.



Antistatic



NO delamination



Ultraviolet resistance



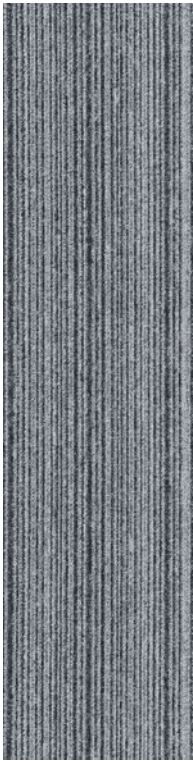
Reduce flammability



Wear resistance



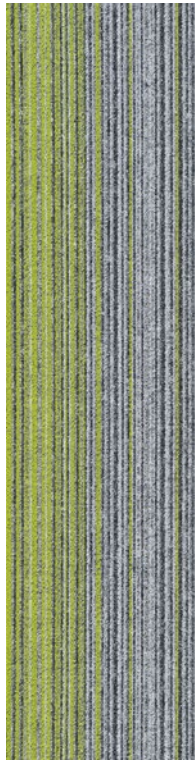
Environmental Friendly



Base Grey
1100



Orange Dream
1101



Apple Green
1102



Magnet Blue
1103



Yellow Flash
1104



Base Grey-1100 & Orange Dream-1101



Base Grey-1100 & Yellow Flash-1104



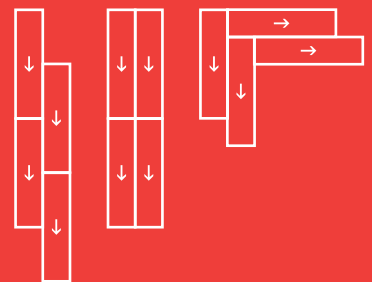
SPECIFICATION

Product Name	: ARTLINE CT
Construction	: Textured Multi Level Loop Pile
Yarn Type	: 100% BCF Synthetic Fiber
Total Thickness	: 5mm +/-
Pile Weight	: 24 oz +/-
Backing Type	: Fine Bitumen + Non-woven
Tile Size	: 250mm x 1000mm
Tile Per Box	: 20pcs

IMPORTANT NOTES:

- Vacuum carpets regularly in a diagonal direction.
- Use a good quality carpet cleaner according to the manufacturer's instructions to remove stains and avoid using petrol or similar products.
- Actual production may vary slightly from the sample due to batch variations.
- Dye lot variations may cause slight color differences in carpets.
- Protect carpets with chair pads to maintain appearance, prevent wear, and avoid carpet delamination.
- Shading, commonly known as "water marking," is an effect of carpet pile direction changes, and it is a characteristic of the product and not a manufacturing defect.
- Special attention may be required by installers for patterned carpets to ensure a suitable match.

RECOMMENDED INSTALLATION METHODS



Antistatic



NO delamination



Ultraviolet resistance



Reduce flammability



Wear resistance



Environmental Friendly



Mystic Haze
1351



Night Owl
1352



Charred Oak
1353



Night Owl-1352



Charred Oak-1353

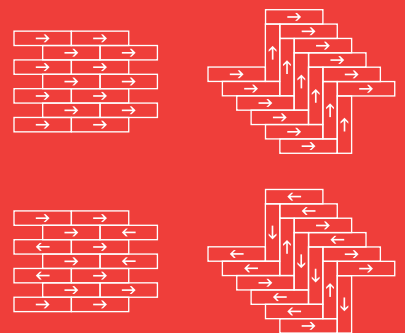


Mystic Haze-1351 + Night Owl-1352 + Charred Oak-1353

SPECIFICATION

- Product Name** : VERMITON CT
- Construction** : Textured Multi Level Loop Pile
- Yarn Type** : 100% PP BCF Fiber
- Pile Weight** : ±24oz / yd²
- Pile Height** : ±5mm
- Backing** : PVC + Reinforced Fiberglass
- Tile Size** : 25cm x 100cm
- Tile Per Box** : 24pcs

RECOMMENDED INSTALLATION METHODS



IMPORTANT NOTES:

- Vacuum carpets regularly in a diagonal direction.
- Use a good quality carpet cleaner according to the manufacturer's instructions to remove stains and avoid using petrol or similar products.
- Actual production may vary slightly from the sample due to batch variations.
- Dye lot variations may cause slight color differences in carpets.
- Protect carpets with chair pads to maintain appearance, prevent wear, and avoid carpet delamination.
- Shading, commonly known as "water marking," is an effect of carpet pile direction changes, and it is a characteristic of the product and not a manufacturing defect.
- Special attention may be required by installers for patterned carpets to ensure a suitable match.



Antistatic



NO delamination



Ultraviolet resistance



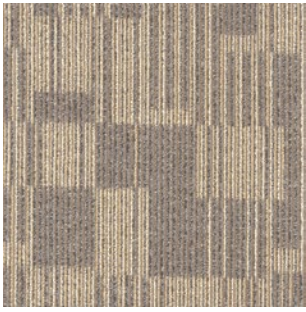
Reduce flammability



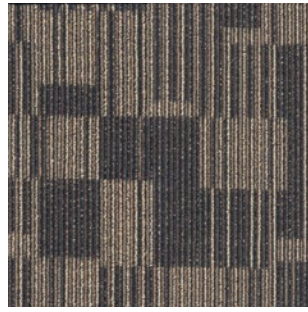
Wear resistance



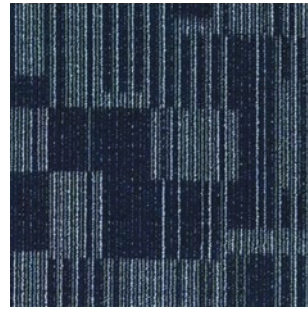
Environmental Friendly



Sandy Beige-1105



Monster Brown-1106



Midnight Blue-1107



Smoky Grey-1108



Sandy Beige-1105



Monster Brown-1106



Midnight Blue-1107



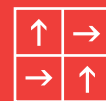
Smoky Grey-1108

SPECIFICATION

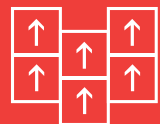
- Product Name** : ELEMENT CT
Construction : Tufted Multi Level Loop Pile
Yarn Type : 100% BCF Synthetic Fiber
Total Thickness : 5-6mm +/-
Pile Weight : 26 oz +/-
Backing Type : PVC + Reinforced Fiberglass
Tile Size : 500mm x 500mm
Tile Per Box : 20pcs

RECOMMENDED INSTALLATION METHODS

Quarter-turn



Ashler-turn



IMPORTANT NOTES:

- Vacuum carpets regularly in a diagonal direction.
- Use a good quality carpet cleaner according to the manufacturer's instructions to remove stains and avoid using petrol or similar products.
- Actual production may vary slightly from the sample due to batch variations.
- Dye lot variations may cause slight color differences in carpets.
- Protect carpets with chair pads to maintain appearance, prevent wear, and avoid carpet delamination.
- Shading, commonly known as "water marking," is an effect of carpet pile direction changes, and it is a characteristic of the product and not a manufacturing defect.
- Special attention may be required by installers for patterned carpets to ensure a suitable match.



Antistatic



NO delamination



Ultraviolet resistance



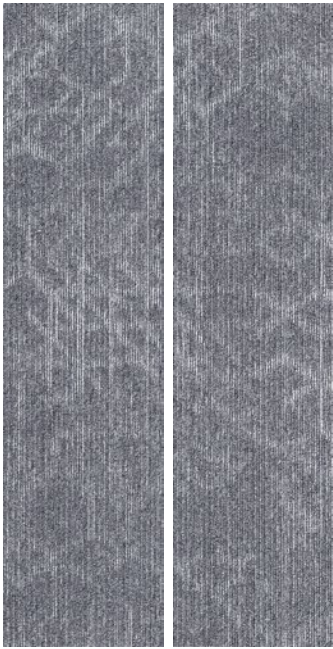
Reduce flammability



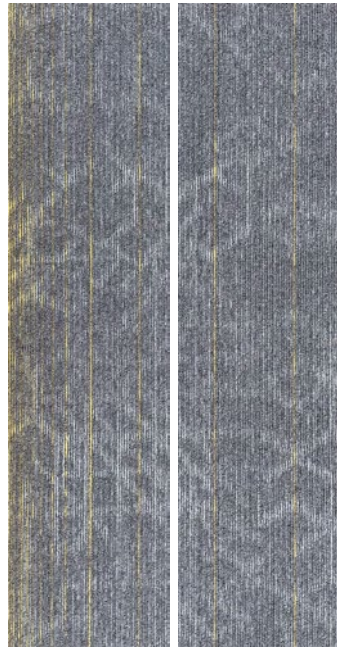
Wear resistance



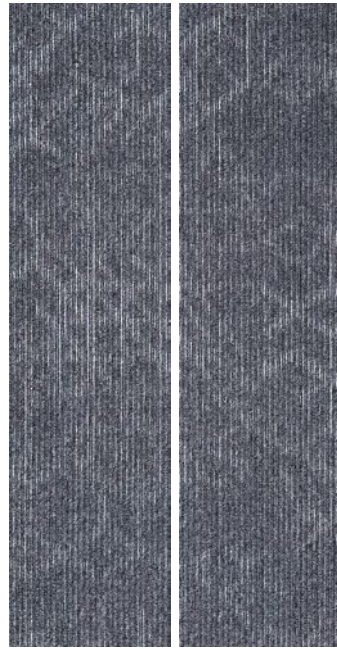
Environmental Friendly



Silver Mist
1387



Yellow Dusk
1388



Charcoal Chic
1389



Green Glade
1390



Silver Mist-1387



Charcoal Chic-1389+Green Glade-1390

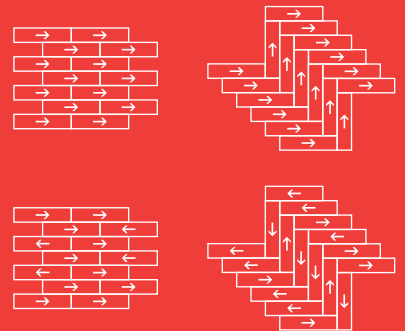


Silver Mist-1387+Yellow Dusk-1388+Green Glade-1390

SPECIFICATION

Product Name	: VALERON CT
Construction	: Multi Level Loop
Surface Fiber	: Mycron Polyester
Backing Material	: PVC + Fiberglass
Gauge	: 1/10
Pile Height	: 4/3/2mm±0.5mm
Pile Weight	: 500±20g/ m ²
Total Weight	: 4kg/sqm
Tile Size	: 25cm x 100cm
Tile Per Box	: 20pcs

RECOMMENDED INSTALLATION METHODS



IMPORTANT NOTES:

- Vacuum carpets regularly in a diagonal direction.
- Use a good quality carpet cleaner according to the manufacturer's instructions to remove stains and avoid using petrol or similar products.
- Actual production may vary slightly from the sample due to batch variations.
- Dye lot variations may cause slight color differences in carpets.
- Protect carpets with chair pads to maintain appearance, prevent wear, and avoid carpet delamination.
- Shading, commonly known as "water marking," is an effect of carpet pile direction changes, and it is a characteristic of the product and not a manufacturing defect.
- Special attention may be required by installers for patterned carpets to ensure a suitable match.



Antistatic



NO delamination



Ultraviolet resistance



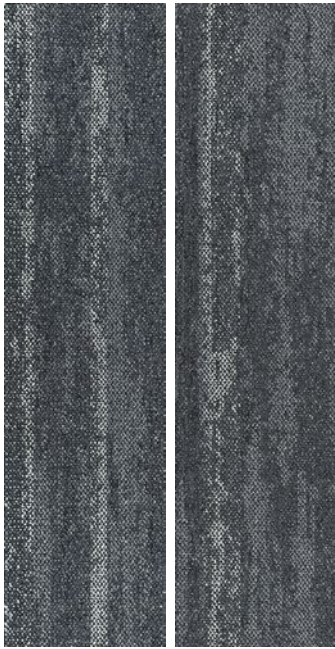
Reduce flammability



Wear resistance



Environmental Friendly



Inkwell Black
1384



Cobalt Cosmos
1386



Grey Mirage
1383



Topaz Oasis
1385



Inkwell Black-1384+Cobalt Cosmos-1386



Grey Mirage-1383

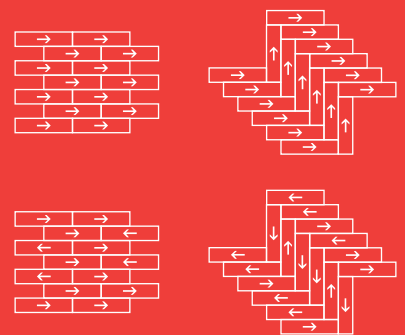


Grey Mirage-1383+Topaz Oasis-1385

SPECIFICATION

Product Name	: CASPIAN CT
Construction	: Multi Level Loop
Surface Fiber	: Nylon6+Polyester+Electroconductive Fiber
Backing Material	: PVC + Fiberglass
Gauge	: 1/12
Pile Height	: 4/3/2mm
Total Height	: 8mm
Pile Weight	: 500±20g/ m ²
Total Weight	: 4kg/sqm
Tile Size	: 25cm x 100cm
Tile Per Box	: 20pcs

RECOMMENDED INSTALLATION METHODS



IMPORTANT NOTES:

- Vacuum carpets regularly in a diagonal direction.
- Use a good quality carpet cleaner according to the manufacturer's instructions to remove stains and avoid using petrol or similar products.
- Actual production may vary slightly from the sample due to batch variations.
- Dye lot variations may cause slight color differences in carpets.
- Protect carpets with chair pads to maintain appearance, prevent wear, and avoid carpet delamination.
- Shading, commonly known as "water marking," is an effect of carpet pile direction changes, and it is a characteristic of the product and not a manufacturing defect.
- Special attention may be required by installers for patterned carpets to ensure a suitable match.



Antistatic



NO delamination



Ultraviolet resistance



Reduce flammability



Wear resistance

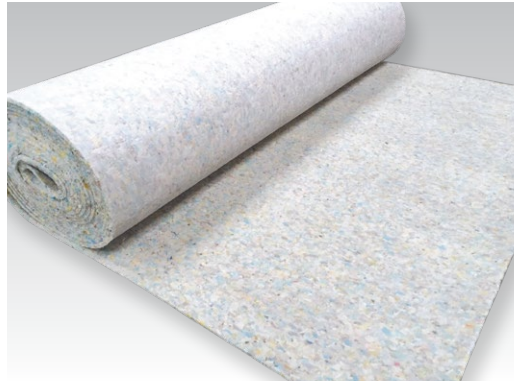


Environmental Friendly

ACCESSORIES



Heat Bond Tape



PU Underlay



Carpet Gripper



Accessories



Sealant



CA Glue



Carpet Glue



Vinyl Glue



PRIMELAY®

OUR BRANDS



scan to visit

PSF INDUSTRIES SDN BHD (912218-D)

No. 19, Jalan BA/3, Kawasan Perusahaan Bukit Angkat, 43000 Kajang, Selangor, Malaysia.

+6017-556 0103

admin@primelay.com.my

www.primelay.com.my

