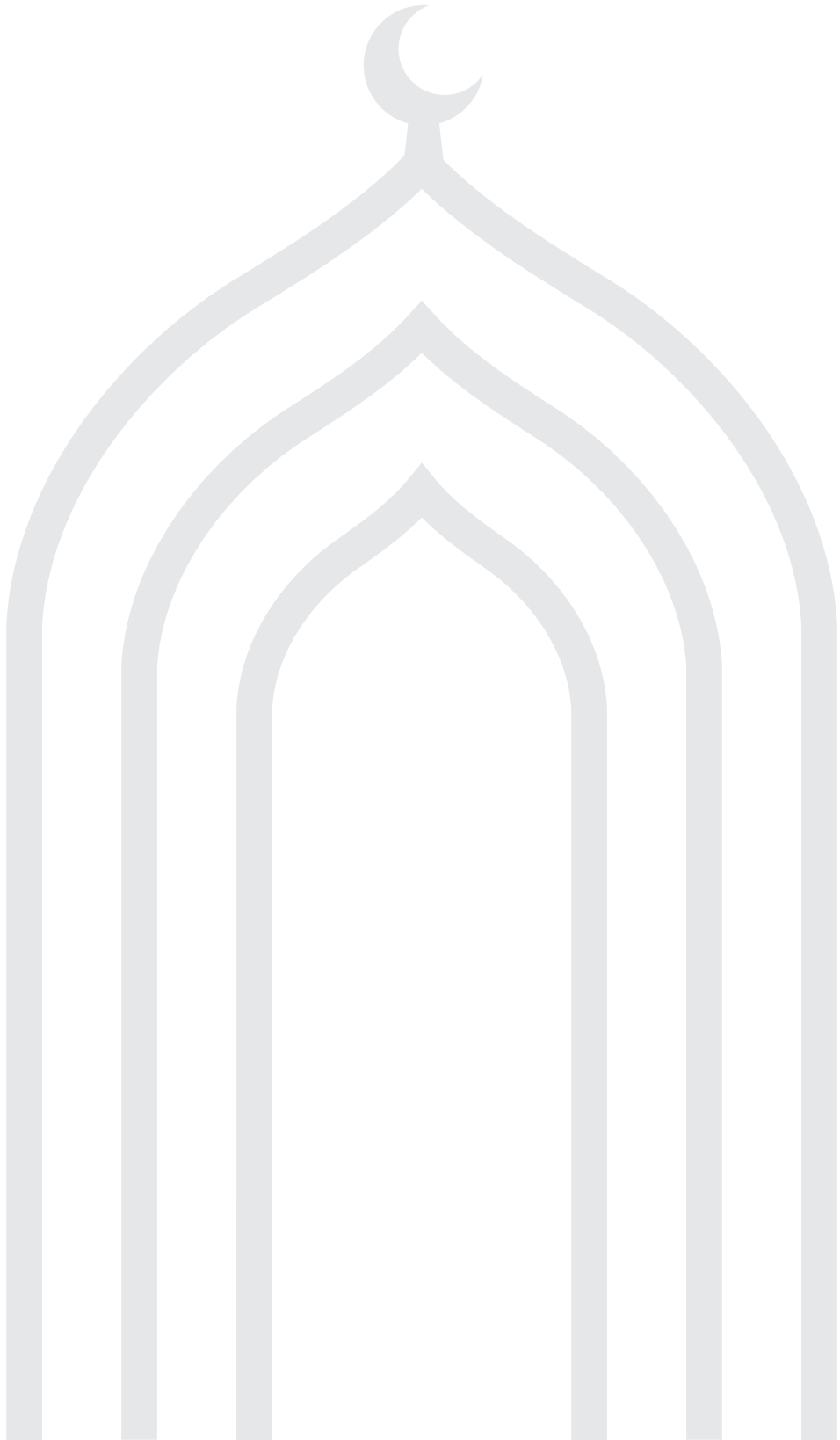
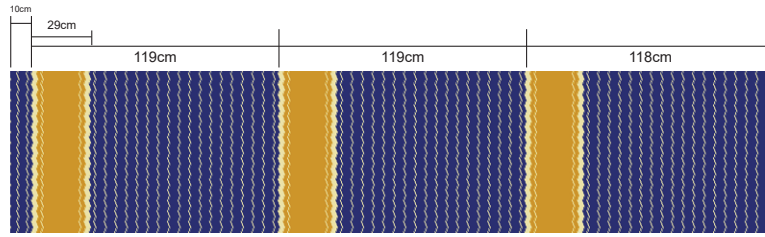


M O S Q U E
C A R P E T S

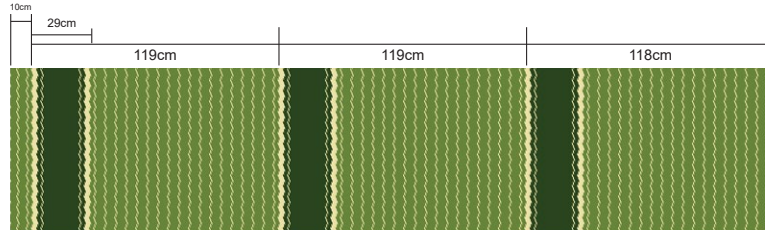




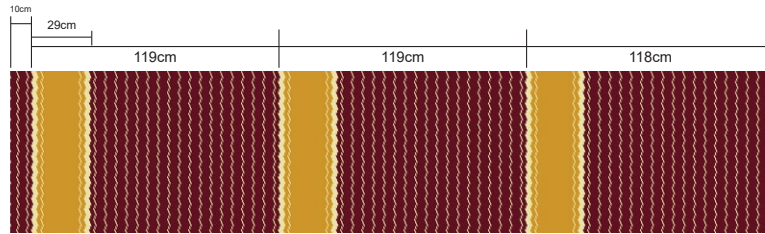
AL-IMAN



Zarqa Blue-1420



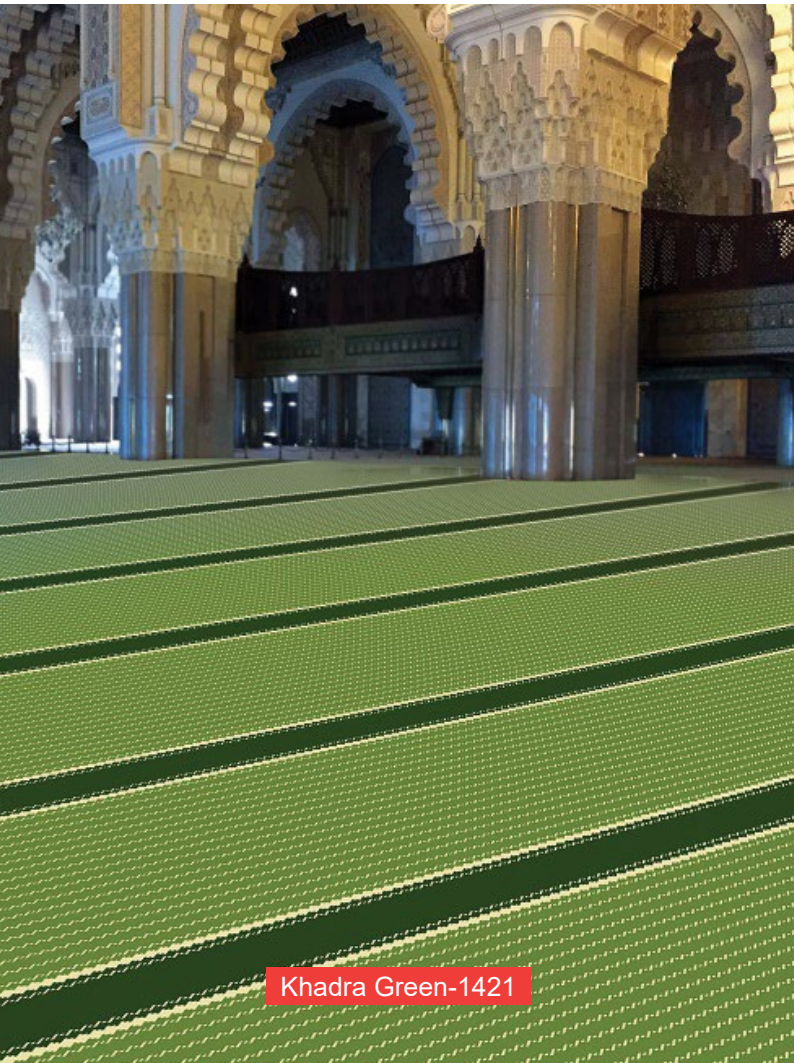
Khadra Green-1421



Hamra Red-1422



Zarqa Blue-1420



Khadra Green-1421



Hamra Red-1422

SPECIFICATION

Product Name	: AL-IMAN
Yarn Pile	: 100% Synthetic Fiber
Construction	: Graphic Patterned Level Cut
Pile Height	: ±6mm
Total Height	: ±8mm
Pile Weight	: 700gm±50g/m ²
Total Weight	: 1500gm±50g/m ²
Backing	: Tufted Action Back
Roll Width	: 3.66m (12')



Antistatic



NO delamination



Ultraviolet resistance



Reduce flammability



Wear resistance



Environmental Friendly

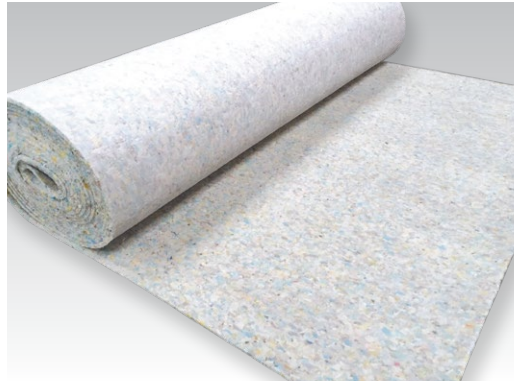
IMPORTANT NOTES:

- Vacuum carpets regularly in a diagonal direction.
- Use a good quality carpet cleaner according to the manufacturer's instructions to remove stains and avoid using petrol or similar products.
- Actual production may vary slightly from the sample due to batch variations.
- Dye lot variations may cause slight color differences in carpets.
- Protect carpets with chair pads to maintain appearance, prevent wear, and avoid carpet delamination.
- Shading, commonly known as "water marking," is an effect of carpet pile direction changes, and it is a characteristic of the product and not a manufacturing defect.
- Special attention may be required by installers for patterned carpets to ensure a suitable match.

ACCESSORIES



Heat Bond Tape



PU Underlay



Carpet Gripper



Accessories



Sealant



CA Glue



Carpet Glue



Vinyl Glue



PRIMELAY®

OUR BRANDS



scan to visit

PSF INDUSTRIES SDN BHD (912218-D)

No. 19, Jalan BA/3, Kawasan Perusahaan Bukit Angkat, 43000 Kajang, Selangor, Malaysia.

+6017-556 0103

admin@primelay.com.my

www.primelay.com.my

